



# Early endoscopic evaluation of the ileal pouch after ulcerative colitis surgery

Gürel Neşşar

Department of General Surgery, Ankara Yıldırım Beyazıt University Faculty of Medicine, Bilkent State Hospital, Ankara, Türkiye

## ABSTRACT

Surgical treatment of the ulcerative colitis is abdominal procto-colectomy and ileal pouch anal anastomosis. A J-shaped pouch is created from the terminal ileum to serve as a reservoir function of the rectum. Early endoscopic evaluation of the pouch can predict surgical complications and the long-term pouch outcome. The owl's eyes image in the proximal part of the pouch is an indicator that it is technically well constructed.

**Keywords:** Colon, excision, gastrointestinal surgery, pouch

## Diagnosis

Surgical treatment of the ulcerative colitis involves abdominal proctocolectomy and ileal pouch anal anastomosis. A 37 years of male patient underwent surgery for treatment-resistant disease in March, 2025. Eight weeks after the surgery, the ileal pouch was evaluated endoscopically before the protective ileostomy takedown.

## Surgical Technique

Following resection of the entire colon and rectum of the patient, a J-shaped pouch was created from the terminal ileum to serve as a reservoir function of the left colon. Forty centimeters of the small bowel (20-20 cm) were brought together and stapled to create a pouch (Figure 1). Subsequently, the pouch was anastomosed to the anal canal to maintain intestinal continuity.

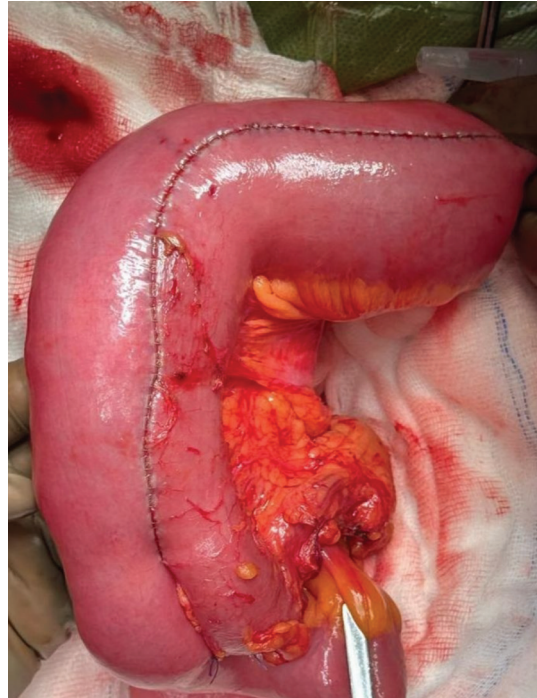


Figure 1. Ileal J-pouch.

**Cite this article as:** Neşşar G. Early endoscopic evaluation of the ileal pouch after ulcerative colitis surgery. *Turk J Surg*. [Epub Ahead of Print]

### Corresponding Author

Gürel Neşşar

E-mail: gurelnessar@hotmail.com

ORCID ID: orcid.org/0000-0002-3891-7565

Received: 03.10.2025

Accepted: 10.01.2026

Epub: 21.01.2026

**DOI:** 10.47717/turkjsurg.2026.2025-10-5

Available at [www.turkjsurg.com](http://www.turkjsurg.com)





**Figure 2.** The owl's eye image.

## Outcome

Endoscopic evaluation of the pouch can predict long-term outcomes (Video 1). The owl's eye image in the proximal part of the pouch is an indicator that it is technically well constructed (Figure 2). The distorted appearance of the "beak" portion of the owl's eyes' is a risk factor for pouch failure (1).

**Video Link:** [youtube.com/watch?v=p0ZbjY898kM&feature=youtu.be](https://youtube.com/watch?v=p0ZbjY898kM&feature=youtu.be)

## Ethics

**Informed Consent:** Informed consent was obtained from the patient.

## Footnotes

**Financial Disclosure:** The author declared that this study received no financial support.

## REFERENCES

1. Elder K, Lopez R, Kiran RP, Remzi FH, Shen B. Endoscopic features associated with ileal pouch failure. *Inflamm Bowel Dis*. 2013;19:1202-1209.