

A rare cause of mechanical obstruction: Intestinal myeloid sarcoma

Tayfun Yoldaş, Varlık Erol, Batuhan Demir, Cüneyt Hoşçoşkun

ABSTRACT

Myeloid sarcoma is a rare aggressive tumour that originates from immature extramedullary myeloid cells. It can be seen as a relapse in patients with acute myeloid leukaemia. Sometimes it can be seen in the form of a solid tumour without any evidence of leukaemia. A case of a 44-year-old male patient who was admitted with symptoms and signs of mechanical intestinal bowel obstruction was operated on. The operation findings showed small bowel obstruction due to a mass. The mass was then resected with end-to-end intestinal anastomosis. The resected mass pathology results were consistent with myeloid sarcoma. The post-operative period was uneventful and adjuvant therapy was applied. In this case report we aimed to evaluate the clinical signs and treatment modalities of small intestinal myeloid sarcoma.

Key Words: Intestinal obstruction, sarcoma, myeloid

INTRODUCTION

Myeloid sarcoma (MS) is a rare and aggressive tumor (1). It arises from extramedullary immature myeloid cells (1, 2). Burns first defined this entity in 1811, later King called it as chloroma due to the green staining with myeloperoxidase (3, 4). It is usually located in the bone, periosteum, soft tissue, lymph nodes, skin, orbital cavity, paranasal sinuses, gastrointestinal tract, genitourinary tract, breast, cervix, salivary glands, mediastinum, pleura, heart, peritoneum, biliary tract, and central nervous system. However, involvement of more than two organs is quite rare (5). It can transform into acute myeloid leukemia (AML), myelodysplastic disorders or myelodysplastic syndromes (6). Sometimes it may present in the form of a solid tumor without any evidence of leukemia. In most of these patients, AML develops usually 1 to 49 months after the diagnosis of myeloid sarcoma (7). Regardless of its form, the presence of myeloid sarcoma is a sign of poor prognosis. In this case report, the clinical presentation and treatment of myeloid sarcoma of the small bowel was evaluated.

CASE PRESENTATION

A 44-year-old male patient presented to Ege University Faculty of Medicine Hospital Emergency Service with complaints of abdominal pain, distention, nausea, and vomiting. He had been suffering from these symptoms for the past 5 months and being evaluated. He presented to the ER due to progression of his symptoms. On physical examination, there were no signs of acute abdomen. The plain abdominal X-ray showed air-fluid levels at the small bowel level and dilatation of bowel loops suggesting mechanical bowel obstruction. Abdominal ultrasonography was normal except dilated bowel loops. The abdominal computed tomography revealed wall thickening at the level of the ileal loops compatible with submucosal hematoma, and findings compatible with mechanical bowel obstruction at this level (Figure 1). There were no abnormalities in biochemical parameters. He had no co-morbidities except diabetes mellitus (DM).

On the fifth day of clinical follow-up, surgery was planned since his symptoms did not regress. In the operation conducted in January 2012, a 5 cm mass that caused obstruction at the ileal level was detected, and a partial small bowel resection with end to end anastomosis was performed (Figure 2). The pathologic evaluation of the surgical specimen revealed myeloid sarcoma of the small bowel. Diffuse infiltration of medium-sized cells was observed throughout the entire bowel wall. Immunohistochemical examination of the neoplastic infiltration was positive for CD34, CD68, lysozyme, MPO, CD117, CD38 and bcl-2, and negative for CD2, CD3, CD4, CD8, CD10, CD20, CD56, CD57, CD79a, CD138, MUM-1, PAX5, and cytokeratin oscar. The Ki67 proliferation index was found as 70%. The patient was discharged on the seventh postoperative day after an uneventful recovery, and was referred to the Hematology Department. He received systemic chemotherapy. On his ninth postoperative month follow-up, the patient was in complete remission without signs of AML or relapse.

Department of General Surgery,
Ege University Faculty of
Medicine, Izmir, Turkey

This case is presented in 18th
National Surgical Congress
(23-27 May 2012, Izmir)

Address for Correspondence
Dr. Varlık Erol

Department of General Surgery,
Ege University Faculty of
Medicine, Izmir, Turkey
Phone.: +90 232 390 40 20
e-mail:
varlikero@gmail.com

Received: 16.11.2012

Accepted: 02.12.2012

Online Available Date: 09.07.2013

©Copyright 2014
by Turkish Surgical Association

Available online at
www.ulusalcerahidergisi.org

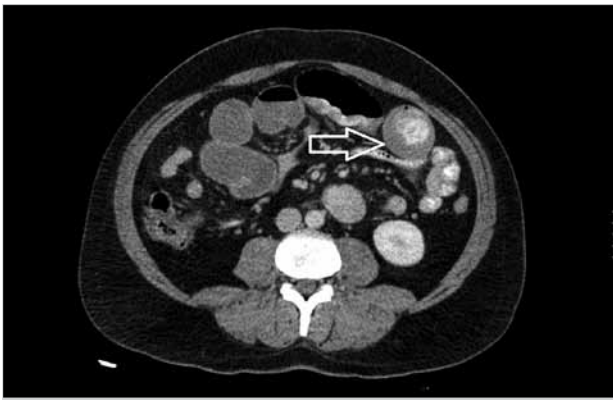


Figure 1. Computed tomography image of the mass

DISCUSSION

Myeloid sarcoma (granulocytic sarcoma (GS)) can be seen in patients with AML during relapse, or may be isolated as in this case. It is a very rare extra-medullary neoplasm detected in 3-4.7% of patients with myeloproliferative disorders (8, 9). The World Health Organization classifies MS that is a hematopoietic tumor under two main headings: GS is the more common form that is composed of myeloblasts, neutrophils and myeloid precursors, whereas monoblastic sarcoma is a rare form that is composed of monoblasts and is associated with acute monoblastic sarcoma (10). It is more common in children and young adults. In a Korean series of 41 patients with MS, the majority of patients were reported to be younger than 40 years (2). Myeloid sarcoma of the small bowel is very rare, the largest series reported to date included 10 patients (2). The most common locations are the skin and lymph nodes. Myeloid sarcoma of the gastrointestinal tract may macroscopically appear in the form of wall thickening, polypoid mass, exophytic mass or ulcerated lesions. Its presence in the gastrointestinal tract usually results in total or partial mechanical bowel obstruction, and acute or intermittent abdominal pain. Less common symptoms include nausea, vomiting, fever and bleeding (11). The most common site of involvement in the gastrointestinal tract is the small bowel (7, 8, 12). Rare involvements of the stomach, large intestine and appendix have been reported (11). There is generally limited involvement in MS, and involvement of more than two different areas is an unusual finding. Although lymph node involvement is common, it may not be seen in isolated MS patients without AML. Histopathologically, isolated MS can be mistaken for a variety of lymphoma and hematopoietic tumors, however, with the introduction of specific immunohistochemical markers such as myeloperoxidase, chloroacetate esterase, lysozyme, CD43, CD13, CD33, and CD117 diagnostic difficulties and errors are greatly diminished in recent years (13). Although the prognosis is variable, it is similar to AML. In patients with isolated MS, Imrie et al. (14) reported that AML developed after 9 months in average, that the mean survival was 22 months, and that local radiotherapy or surgery did not influence survival. Chemotherapy and radiotherapy, because these tumors are radiosensitive, can be implemented following surgery. The most beneficial treatment option is systemic chemotherapy. Yamauchi et al. (12) found that the mean non-leukemic period after the diagnosis of MS was 12 months in patients receiving systemic chemotherapy as compared to 3-6 months in patients without chemotherapy. Kowal et al. (15) treated



Figure 2. Operative view

an 8-year-old male patient with MS of the ileum with surgical resection, systemic chemotherapy and allogenic bone marrow transplantation, and reported that the patient remained in complete remission for 4 years without recurrence.

CONCLUSION

In patients with isolated myeloid sarcoma who have gastrointestinal symptoms (obstruction, bleeding), the most beneficial treatment option to extend the non-leukemic period after surgery and improve survival is systemic chemotherapy. Since these tumors are radiosensitive, radiation therapy can also be implemented. Patients should be informed in terms of development of AML after surgical treatment and should be under close follow up.

Informed Consent: Written informed consent was obtained from patient who participated in this case.

Peer-review: Externally peer-reviewed.

Author Contributions: Concept - T.Y., V.E.; Design - T.Y., V.E.; Supervision - T.Y., C.H.; Funding - B.D.; Materials - T.Y., V.E.; Data Collection and/or Processing - T.Y., B.D.; Analysis and/or Interpretation - C.H.; Literature Review - T.Y., V.E.; Writer - V.E.; Critical Review - C.H.

Conflict of Interest: No conflict of interest was declared by the authors.

Financial Disclosure: The authors declared that this study has received no financial support.

REFERENCES

1. Benjazia E, Khalifa M, Benabdelkader A, Laatiri A, Braham A, Letaief A, et al. Granulocytic sarcoma of the rectum: Report of one case that presented with rectal bleeding. *World J Gastrointest Pathophysiol* 2010; 1: 144-146. [\[CrossRef\]](#)
2. Jung SH, Kim HC, Yu CS, Kim JC. Solitary preleukemic granulocytic sarcoma as a cause of small bowel obstruction. *Gut Liver* 2007; 1: 82-86. [\[CrossRef\]](#)
3. Burns A. Observations of surgical anatomy. In: Burns A, editor. *Head and neck*. Edinburgh: Thomas Royce and Company 1811.p.364-366.
4. King A. A case of chloroma. *Monthly J Med* 1853; 17: 97.
5. Best-Aguilera CR, Vazquez-Del Mercado M, Muñoz-Valle JF, Herrera-Zarate L, Navarro-Hernandez RE, Martin-Marquez BT, et al. Massive myeloid sarcoma affecting the central nervous system, mediastinum, retroperitoneum, liver, and rectum associated with acute myeloblastic leukaemia: a case report. *J Clin Pathol* 2005; 58: 325-327. [\[CrossRef\]](#)

6. Antic D, Elezovic I, Bogdanovic A, Vukovic NS, Pavlovic A, Jovanovic MP, et al. Isolated myeloid sarcoma of the gastrointestinal tract. *Intern Med* 2010; 49: 853-856. [\[CrossRef\]](#)
7. Nieman RS, Barcos M, Berard C. Granulocytic sarcoma: A clinico-pathologic study of 61 biopsied cases. *Cancer* 1981; 48: 1426-1437. [\[CrossRef\]](#)
8. Byrd JC, Edenfield WJ, Shields DJ, Dawson NA. Extramedullary myeloid cell tumors in acute nonlymphocytic leukemia: a clinical review. *J Clin Oncol* 1995; 13: 1800-1816.
9. Uyesugi WI, Watabe J, Petermann G. Orbital and facial granulocytic sarcoma (chloroma): a case report. *Pediatr Radiol* 2000; 30: 276-278. [\[CrossRef\]](#)
10. Brunning RD, Matutes E, Flandrin G, et al. Acute myeloid leukemia not otherwise categorized: myeloid sarcoma. In: Jaffe ES, Harris NL, Stein H, et al, eds. *World Health Organization Classification of Tumours: Pathology and Genetics of Tumours of Haematopoietic and Lymphoid Tissues*. Lyon, France: IARC Press; 2001: 104-105.
11. Kohl SK, Aoun P. Granulocytic sarcoma of the small intestine. *Arch Pathol Lab Med* 2006; 130: 1570-1574.
12. Yamauchi K, Yasuda M. Comparison in treatments of nonleukemic granulocytic sarcoma: report of two cases and a review of 72 cases in the literature. *Cancer* 2002; 94: 1739-1746. [\[CrossRef\]](#)
13. Erkut N, Vetem I, Çobanoğlu Ü, Sönmez M. Presentation of acute myeloid leukemia preceded by myelodysplastic syndrome with multiple extramedullary infiltration: Case report. *Acta Oncologica Turcica* 2009; 42: 121-124.
14. Imrie KR, Kovacs MJ, Selby D, Lipton J, Patterson BJ, Pantalony D, et al. Isolated chloroma: the effect of early antileukemic therapy. *Ann Intern Med* 1995; 123: 351-353. [\[CrossRef\]](#)
15. Kowal-Vern A, Johnson FL, Trujillo Y, Nachman J, Radhakrishnan J, Conard P, et al. Granulocytic sarcoma of the ileum treated by bone marrow transplantation. *Am J Pediatr Hematol Oncol* 1991; 13: 34-38. [\[CrossRef\]](#)